

# Preliminary Report of Resources for Fire at Beacon Manufacturing, Swannanoa, NC Start 09/03/2003

## Fire Departments - 32

### *Personnel Involved in incident*

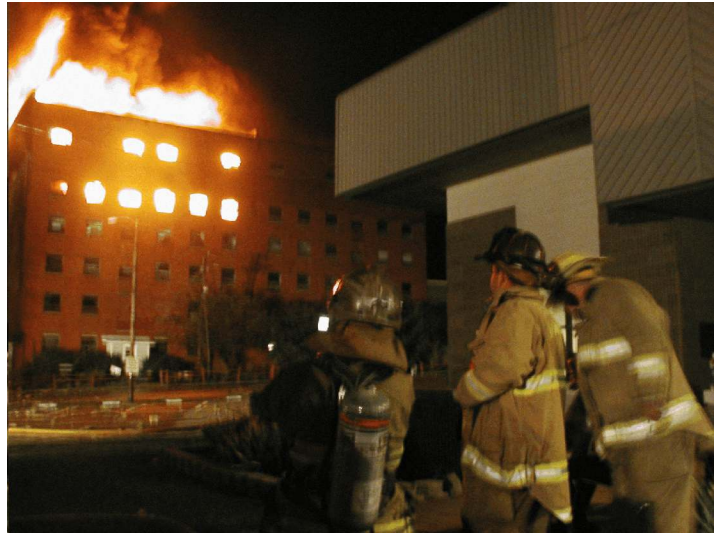
Firefighters	367
EMS Personnel	22
Law Enforcement Officers/Agents	70
Hazardous Material personnel ***	16
Other response agencies	9
Logistics	38
	<b>522</b>

\*\*\*Does not include all environmental cleanup personnel yet

Injuries	<b>0</b>
----------	----------

### *Equipment*

Ladder Trucks	7
Engines	24
Tankers	7
FF support vehicles	17
Ambulances	4
Patrol Cars	19



Buncombe County Fire Department on scene						
Departments (19)	Apparatus-Equipment (47)	Ladders (5)	Engines (19)	Tankers (7)	Supp (16)	Firefighters (299)
Asheville	3 ladders, 2 engines, 1 tanker, 6 support vehicles	3	2	1	6	90
Fairview	1 engine, 1 ladder, 1 tanker, 1 support vehicle	1	1	1	1	22
Black Mountain	1 engine, 2 support vehicles	0	1	0	2	28
West Buncombe	1 tanker	0	0	1	0	7
Swannanoa	3 engines, 1 tanker, 3 support Vehicles, 1 ATV	0	3	1	4	22
Haw Creek	1 engine	0	1	0	0	8
Weaverville	1 ladder, 2 support vehicles	1	0	0	2	11
Reynolds	2 engines	0	2	0	0	9
Enka-Candler	1 engine	0	1	0	0	12
Riceville	1 tanker	0	0	1	0	13
Upper Hominy	1 engine	0	1	0	0	10
Reems Creek	2 engines	0	2	0	0	15
Barnardsville	1 engines	0	1	0	0	5
Jupiter	1 tanker	0	0	1	0	6
Leicester	1 engine	0	1	0	0	7
Woodfin	1 tanker	0	0	1	0	10
Skyland	1 engine, 1 support vehicle	0	1	0	1	18
Broad River	1 engine	0	1	0	0	3
Garren Creek	1 engine	0	1	0	0	3

Other County's Fire Departments on scene						
Departments (13)	Apparatus-Equipment (8)	Ladders (2)	Engines (5)	Tankers (0)	Supp (1)	Firefighters (68)
<b>Haywood County</b>	2	0	2	0	0	18
Clyde	0	0	0	0	0	4
Lake Junaluska	1 engine	0	1	0	0	10
Waynesville	1 engine	0	1	0	0	4
<b>Henderson County</b>	5	2	2	0	1	26
Fletcher	1 engine	0	1	0	0	9
Mills River	1 engine	0	1	0	0	6
Mountain Home	1 ladder, 1 support vehicle	1	0	0	1	5
Valley Hill	1 ladder	1	0	0	0	6
<b>McDowell County</b>	1	0	1	0	0	10
Old Fort	1 engine	0	1	0	0	10
<b>Rutherford County</b>	0	0	0	0	0	14
Bill's Creek	0	0	0	0	0	2
Cherry Mountain	0	0	0	0	0	3
Forest City	0	0	0	0	0	2
Rutherfordton	0	0	0	0	0	4
Shingle Hollow	0	0	0	0	0	3

Fill-in Move -up Units (Not counted in total resources for incident, these units covered other stations that were assisting us)						
<b>Buncombe County</b>						
Enka-Candler (to AFD stat 6)	1 engine, 1 TAC					3
French Broad (to AFD stat 3)	1 engine					2
<b>McDowell County</b>						
Crooked Creek (to Broad River FD)	1 engine					4
Marion (to AFD stat 1)	1 ladder					5
<b>Rutherford County</b>						
Chimney Rock (to Fairview FD)	1 engine, 1 tanker					2

Law -Enforcement (Includes investigation, scene/area security from local, state and Federal responses)			
Agencies (6)	Special Units (3)	Patrol cars (19)	Officers/Agents (70)
Bunc. County Arson Task Force	1 truck, 1 support vehicle		2
ATF - Bureau of Alcohol, Tobacco & Firearms	1 response unit		5
Black Mountain Police Dept		7	7
Buncombe Sheriff's Dept.		9	50
NC Highway Patrol		3	3
SBI - NC State Bureau of Investigation			3

Emergency Medical Related			
Agencies (2)	Ambulances (4)	Other (5)	Personnel (22)
Buncombe County Rescue	2	2	8
Buncombe EMS	2	3	14

Hazardous Materials response (Includes multiple related functions) (Does not include all environmental cleanup equipment and personnel that have been involved yet)		
		Personnel (16)
Buncombe Hazardous Waste	1 unit	1
WNC Air Quality	1 vehicle	2
Regional Response Team-6	1 unit	5
Emergency Management	area coordinator	1
Garco (Contractor)	?	?
Mountain Environmental (Contractor)	?	?
DNER	team	2
		16

Other Response Agencies:		
Agencies (4)		Personnel (9)
Emergency Management	1 unit	1
Buncombe Fire Marshal	2 units	2
Buncombe Overhead Team	0	4
USAR Task Force 2	trailer/Collapse/rescue equipment	0
Division of Highways	(Barricades)	2

Logistics/Food Support (Does not include multiple individuals who assisted these agencies)		
Agencies (4)		Personnel (38)
American Red Cross	1 canteen unit	11
Hearts With Hands	2 vehicles, trailer	14
SVFD Auxilliary	0	5
The Cove	1 support unit	8